

## Improvements on Aequator Bolivia 2.0

Overview about the Bolivia 2.0 changes and improvements.

### Mechanical

- Adapted AFG grinder and bracket
- Adapted brewing unit bracket
- New bean container safety switches
- New locker on bean container lid
- New thermo block insulation
- Adapted water pump position
- Adapted valve block bracket
- New instant container metal spiral
- New cup positioning plate
- Adapted back cover connections
- Adapted side cover fixation
- Adapted top cover
- New direct wastewater option

### Electronic

- New power supply
- New grinder PCB
- New wiring harness

### Software

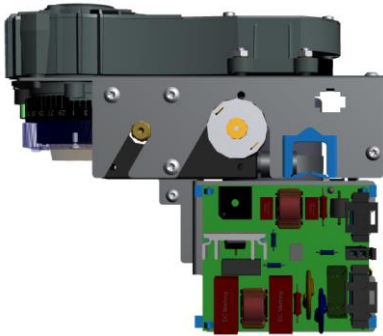
- Software update handling (control board and HMI via USB)
- Languages: German, English and Dutch
- New recipe handling
- New screen saver

## Mechanical

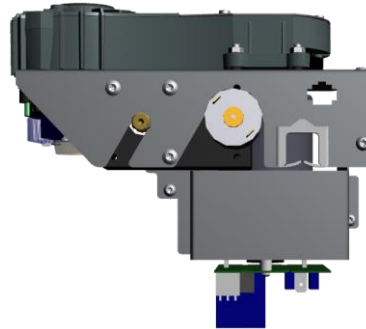
### Adapted AFG grinder and bracket

- improved grinder functionality
- new conical high-precision burrs
- adapted bracket because of grinder changes

#### NEW version



#### Old version



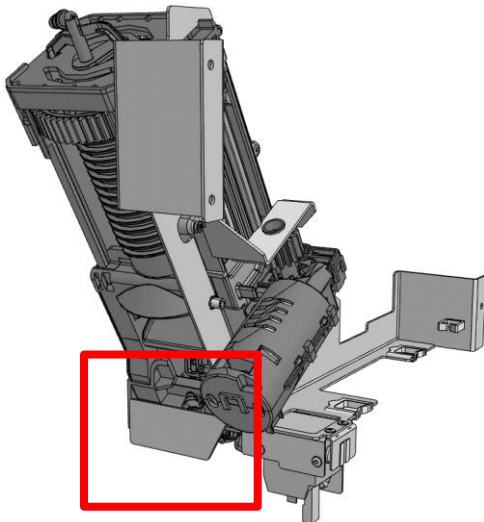
*Compatibility to Bolivia 1.0*

*The new grinder is not backwards compatible. Old version has to be used for Bolivia 1.x.*

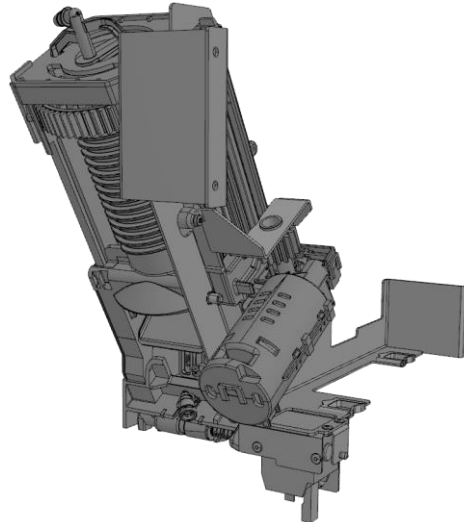
### Adapted brewing unit bracket

- Added water shield on the brewing unit bracket
- Guide the water flow during brewer rinsing and cleaning

#### NEW version



#### Old version

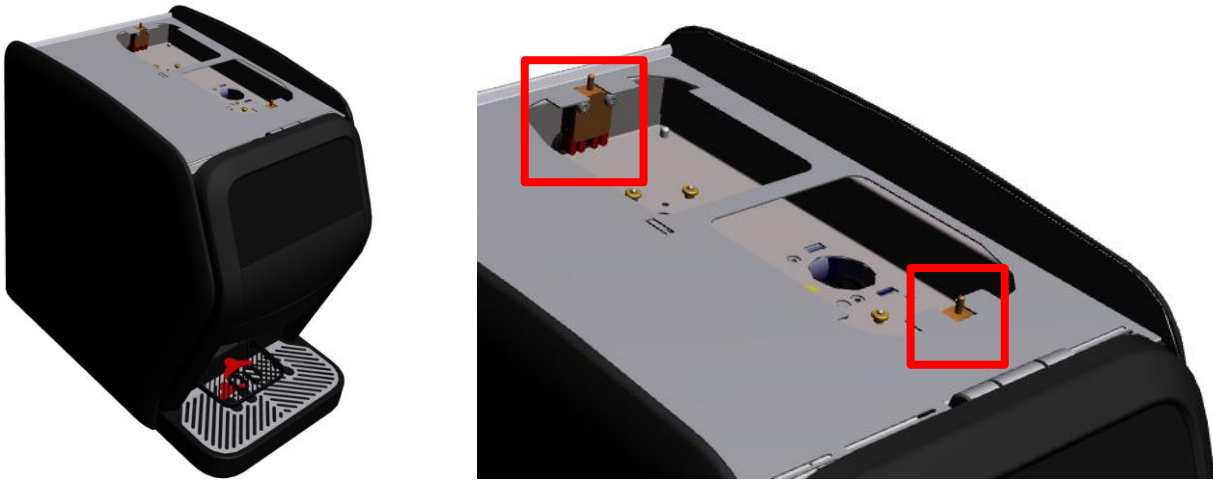


*Compatibility to Bolivia 1.0*

*The new bracket is fully backwards compatible.*

## New bean container safety switches

- Additional switches for safety reason
- Missing bean hoppers are detected and don't allow the machine to work

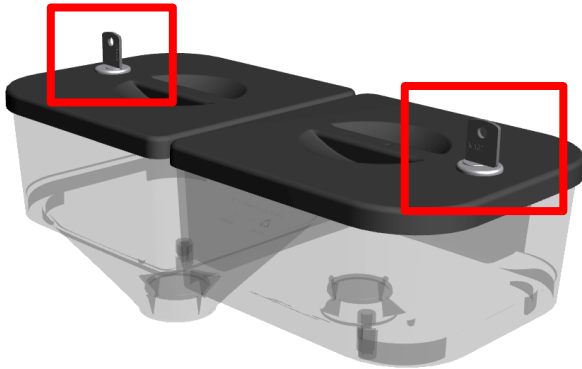


*Compatibility to Bolivia 1.0*

*Due to the mechanical design and the existing harness, the safety switches cannot be applied to existing machines.*

## New locker on bean container lid

- Additional locker on both bean container lids
- Unauthorised access to the beans is blocked



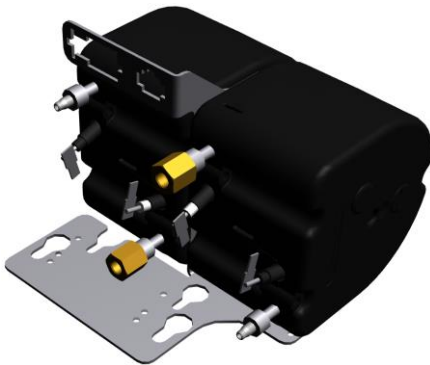
*Compatibility to Bolivia 1.0*

*The lockers can be applied to the existing bean container covers.*

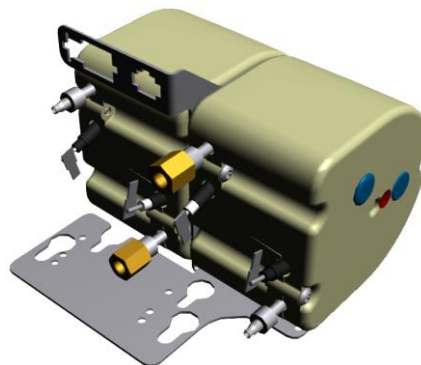
## New thermo block insulation

- Changed color and plastic compound of the insulation

### NEW version



### Old version

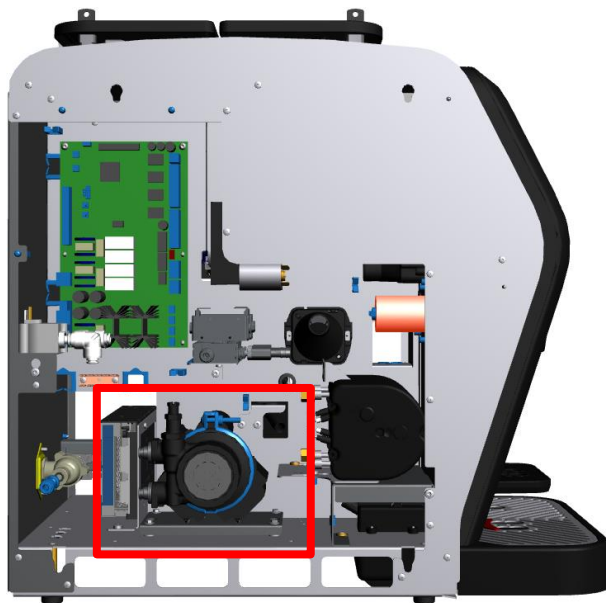


*Compatibility to Bolivia 1.0*

*The new thermo block is fully backwards compatible.*

## Adapted water pump position

- Better access to the relevant connections
- Improved connection to inlet valve and to flowmeter
- Easier access to the pressure adjustment screw



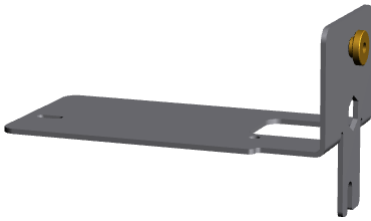
*Compatibility to Bolivia 1.0*

*The new water pump position is not backwards compatible. Old version has to be used for Bolivia 1.x.*

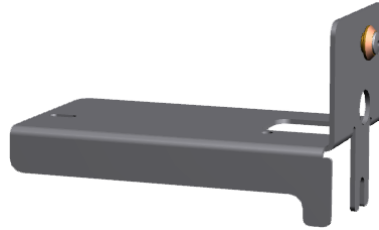
## Adapted valve block bracket

- Modified valve block bracket

### NEW version



### Old version



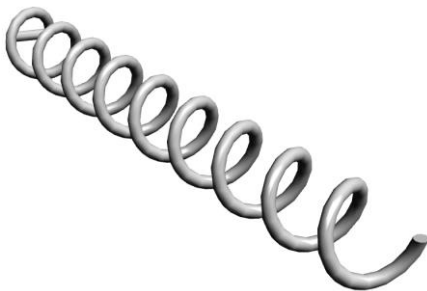
*Compatibility to Bolivia 1.0*

*The new valve block bracket is fully backwards compatible.*

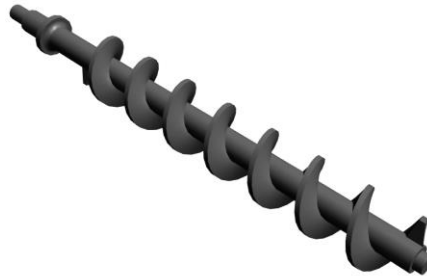
## New powder container metal spiral

- Replaced conveying screw in the powder container

### NEW version



### Old version

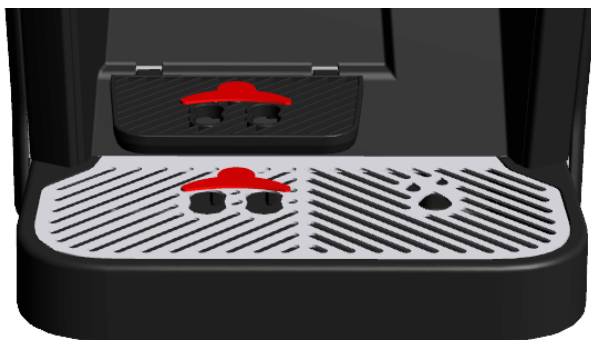


*Compatibility to Bolivia 1.0*

*The new metal spiral is fully backwards compatible.*

## New cup positioning plate

- Improved cup positioning under the coffee outlet
- Assembling possible on drip tray plate and on cup stand

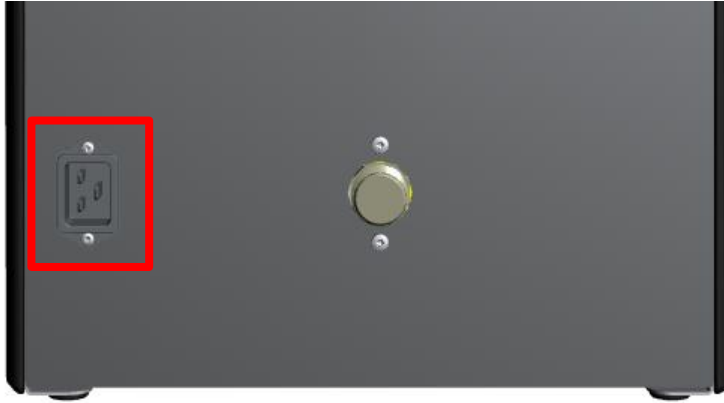


*Compatibility to Bolivia 1.0*

*The cup positioning plate on the cup stand is backwards compatible. The drip tray plate needs to be replaced if the positioning plate needs to be assembled.*

## Adapted back cover

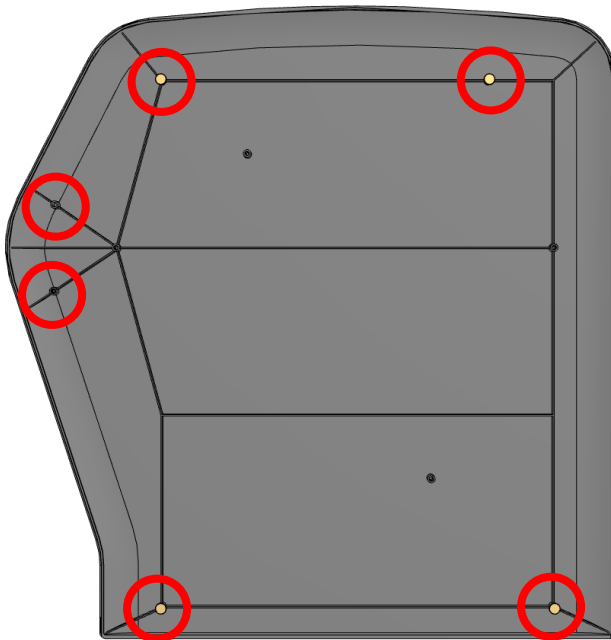
- Improved design of the machine's back cover
- Unnecessary connections are removed
- Adapted plug socket position for power cable and inlet valve position



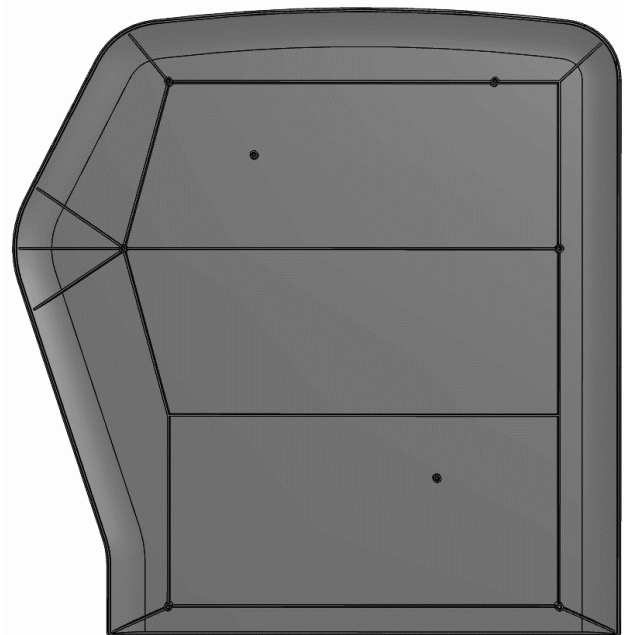
## Adapted side cover fixation

- Guide bolts for easier re-assembly of the side covers
- Added further screw domes, thread inserts and guide bolts
- Easier access to the torx screw T10 to remove the side cover

### NEW version



### Old version



*Compatibility to Bolivia 1.0  
The new side covers are fully backwards compatible.*

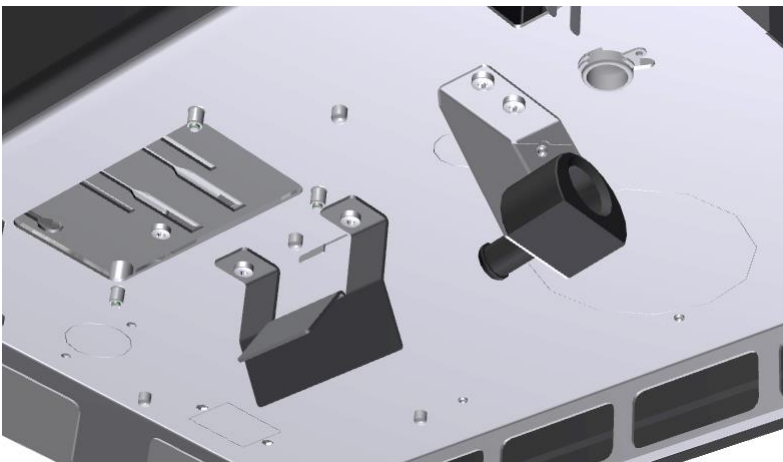
## Adapted top cover

- Improved design of the machine's top cover
- Cups don't drop on the backside of the machine
- Air slits on the front are smaller not to allow the coffee beans to drop into the machine



## New direct wastewater option

- Wastewater connection and guide bracket can be attached without opening the machine
- Easy handling for the drip tray cleaning



*Compatibility to Bolivia 1.0*

*The direct wastewater connection is not backwards compatible.*

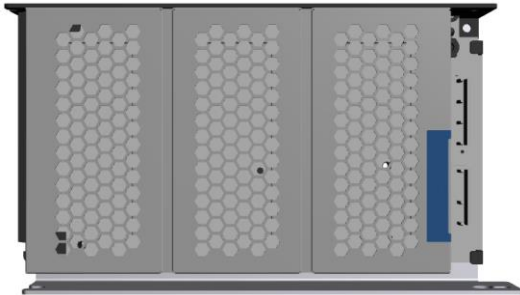


## Electronic

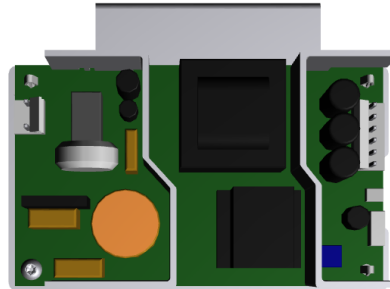
### New power supply

- New version of the power supply
- Better shield against external radiation and protection of dust

#### NEW version



#### Old version



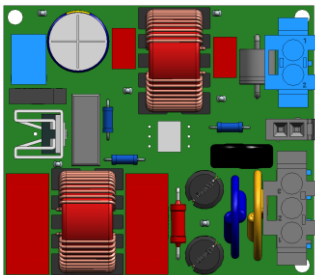
*Compatibility to Bolivia 1.0*

*The new back cover is not backwards compatible. Old version has to be used for Bolivia 1.x.*

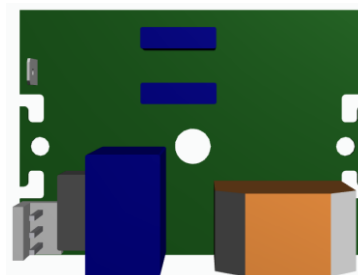
### New grinder PCB

- Redesigned grinder PCB has been redesigned with an up-to-date electronic design
- Better functionality of the AFG grinder

#### NEW version



#### Old version



*Compatibility to Bolivia 1.0*

*The new back cover is not backwards compatible. Old version has to be used for Bolivia 1.x.*

### New wiring harness

- Changed wiring harness (high and low voltage) because of adaptations and improvements





## Software

The main improvements of the new **Bolivia software bundle 3.1.1** are:

- Software update of HMI and control board via USB memory stick
- Available languages are German, English and Dutch
- New wizards have been added to the software
- Easier recipe handling and implementation of additional setups in the basic recipes for weaker, stronger and double cups
- Adapted heating parameters to avoid splashing of hot water and the mixer bowl overflow
- Coarseness level can be adapted individually on each recipe
- Bean container selection on each recipe
- Aequator screen saver has been added

The new Bolivia software bundle is not compatible with existing software versions.